



# Sikalastic®-632 R

## REACTIVE PURE POLYURETHANE WATERPROOFING MEMBRANE

BUILDING TRUST



# ROOF WATERPROOFING



## INTRODUCTION

Many different roof waterproofing products (both coatings and membranes) are available. Considering ideal jobsite conditions (perfect substrate quality and substrate preparation, professional installation, dry conditions during installation etc.) the various systems will perform within the limits of the selected product technology.

## CHALLENGES

Jobsite conditions are never ideal. Challenges **during installation** of roof waterproofing include:

- Accidental rain showers
- Limited access
- Time pressure
- Low-skilled labor

Challenges **during service life** of the roof include:

- Harsh climatic conditions (include severe UV exposure)
- Ponding water on roof surface and in gutters
- Substrate cracking
- Missing maintenance

# WHAT IS Sikalastic®-632 R?

Sikalastic®-632 R is a liquid applied, pure PU roof waterproofing membrane designed for exposed application.

## Standard Polyurethane (PU) LAM



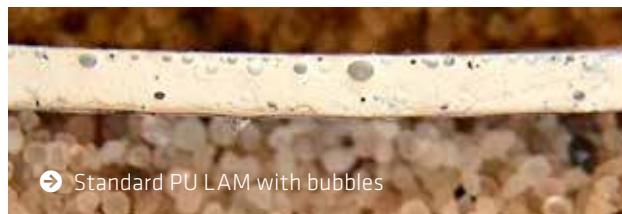
## Sikalastic®-632 R



### EARLY RAIN RESISTANCE

A standard PU LAM film will take several hours to achieve rain resistance. In case of an unexpected rain shower, the freshly applied PU LAM film gets washed away and needs to be re-applied.

Sikalastic®-632 R is designed to reach rain resistance within 30 minutes to 1 hour after application. An unexpected rain shower will not wash away the membrane. Depending on the intensity of rain, the rain drops will leave slight marks on the Sikalastic®-632 R surface only.



### BUBBLE-FREE CURING

A standard PU LAM film will react with ambient moisture during the initial curing process resulting in bubble formation. Bubbles greatly reduce the physical properties and overall performance of the cured PU LAM film.

Sikalastic®-632 R is powered by *i-Cure*® latent hardener technology. Moisture and rain-water will not react with the Sikalastic®-632 R membrane during the initial process and there is no formation of bubbles.

# WHERE CAN Sikalastic®-632 R BE USED?

Sikalastic®-632 R can be used to waterproof new and existing concrete roof structures.



## NEW ROOFS

Sikalastic®-632 R is used as an exposed membrane applied to the concrete roof slab or a cement screed. Especially suited for roofs with minimum slopes and having limited access (maintenance only).

## ROOF REFURBISHMENT

Sikalastic®-632 R is used as an exposed membrane applied directly to the aged bitumen sheet, concrete screed or tiles. Especially suited for congested roofs with lots of installations and for roofs with weight restrictions (no protective screed required).



### **GUTTERS**

Sikalastic®-632 R is used as an exposed membrane for waterproofing of gutters and other critical roof elements.

### **DETAILING**

Sikalastic®-632 R is used as an exposed membrane reinforced with Sika® Reemat or Sikalastic® Fleece for detailing at outlets, penetrations, upstands, etc.

# WHY CHOOSE Sikalastic®-632 R?

Sikalastic®-632 R has relevant advantages in terms of installation and performance compared with other liquid applied membranes.

## 1 HOUR EARLY RAIN RESISTANCE

Within 1 hour after application an unexpected rain shower will not wash away the membrane nor affect the curing of the membrane.



- ➔ **safe planning and installation** also during rainy season

## i-Cure® TECHNOLOGY

Sikalastic®-632 R is based on i-Cure® technology.



- ➔ **bubble-free curing**

## 1 COMPONENT PURE POLYURETHANE

Sikalastic®-632 R is a reactive curing, 1 component polyurethane LAM. Sikalastic®-632 R does not contain any bitumen.

- ➔ **easy handling** (no dosing / mixing)
- ➔ **fast curing** (curing reaction and not just drying)
- ➔ **fast installation** (2 high-build layers only)
- ➔ **highly flexible and crack-bridging** (ASTM C836)
- ➔ **root penetration resistant** (DIN 4062)

## 1 PRODUCT

The same 1 product Sikalastic®-632 R can be used for horizontal and vertical (details) surfaces as well as for exposed and non-exposed application.

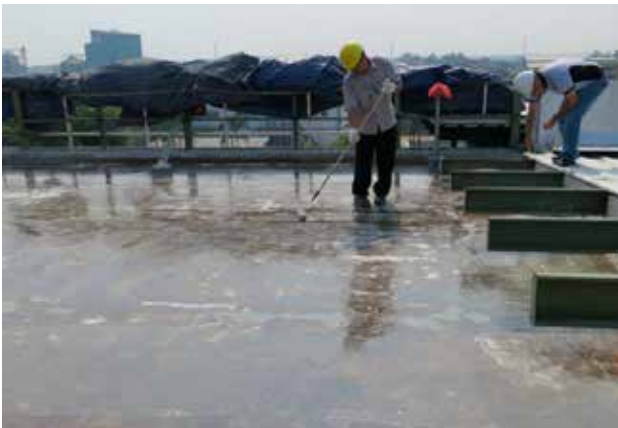
- ➔ **easy logistics** and stock-keeping

## SYSTEM BUILD-UPS

System	Coating System	Reinforced System
Substrate	Concrete slab, concrete screeds, concrete tiles, tiles, bitumen membranes etc.	
Primers	Refer to the relevant Product Data Sheet	
Build-Up	2 x Sikalastic®-632 R Local reinforcement with Sikalastic® Fleece or Sika® Reemat	1 x Sikalastic®-632 R, fully reinforced with Sikalastic® Fleece or Sika® Reemat 1 x Sikalastic®-632 R
Total Consumption	1.05 kg/m <sup>2</sup> to 2.1 kg/m <sup>2</sup>	1.75 kg/m <sup>2</sup> to 2.45 kg/m <sup>2</sup>
Dry Film Thickness (DFT)	0.6 mm to 1.2 mm	Approximate 1.1 mm to 1.5 mm (including reinforcement)

# HOW IS Sikalastic®-632 R INSTALLED ?

Sikalastic®-632 R can be safely installed by certified waterproofing applicators without the need for special equipment.



## SELECTED REFERENCES

Item	Project, Location	Area (m <sup>2</sup> )	Item	Project, Location	Area (m <sup>2</sup> )
1.	Bugis Junction, Singapore	1,500	11.	Krakatau Posco Steel Plant, Cilegon, Indonesia	5,000
2.	The Point, Danang, Vietnam	10,000	12.	Carrefour Cempaka Putih, Jakarta, Indonesia	3,000
3.	Danang Ocean Villas, Vietnam	4,000	13.	Yakult Factory, East Java, Indonesia	300
4.	Dien Bien Phu Museum, Vietnam	1,200	14.	Hong Kong Disneyland Hotel	1,600
5.	Tha Garden, Hanoi, Vietnam	1,000	15.	Rafflesia International School, Kajang, Malaysia	2,000
6.	V-Star Building, HCMC, Vietnam	1,000	16.	Royal Lake Club, Kuala Lumpur, Malaysia	1,500
7.	Saigon Center Phase 2 & 3, HCMC, Vietnam	7,000	17.	Cyber Centre Point, Cyberjaya, Malaysia	800
8.	Avani Villas, Quy Nhon, Vietnam	3,000	18.	KFC Drive Thru Stutong, Kuching, Malaysia	400
9.	HCMC Commissioner Office, Vietnam	2,000	19.	Makhamah Syariah, Kedah, Malaysia	700
10.	Vinata Tower, Hanoi, Vietnam	1,000	20.	Ledang Heights, Johor Bahru, Malaysia	300

# SIKA FULL RANGE SOLUTIONS FOR CONSTRUCTION:



WATERPROOFING



CONCRETE



REFURBISHMENT



SEALING AND BONDING



FLOORING



ROOFING

## WHO WE ARE

Sika is a globally active specialty chemicals company. Sika supplies the building and construction industry as well as manufacturing industries (automotive, bus, truck, rail, solar and wind power plants, façades). Sika is a leader in processing materials used in sealing, bonding, damping, reinforcing and protecting loadbearing structures. Sika's product lines feature high quality concrete admixtures, specialty mortars, sealants and adhesives, damping and reinforcing materials, structural strengthening systems, industrial flooring as well as roofing and waterproofing systems.

Our most current General Sales Conditions shall apply.  
Please consult the Data Sheet prior to any use and processing.



## SIKA KIMIA SDN BHD

No. 9, Jalan Timur,  
46000 Petaling Jaya,  
Selangor DE, Malaysia  
Phone +603 7957 0111  
Fax +603 7656 7291  
www.sika.com.my

**BUILDING TRUST**

