

SIKA PROJECT REFERENCE



RSKU PUNCAK BESTARI
@ SELANGOR



RSKU CYBER VALLEY
@ SELANGOR

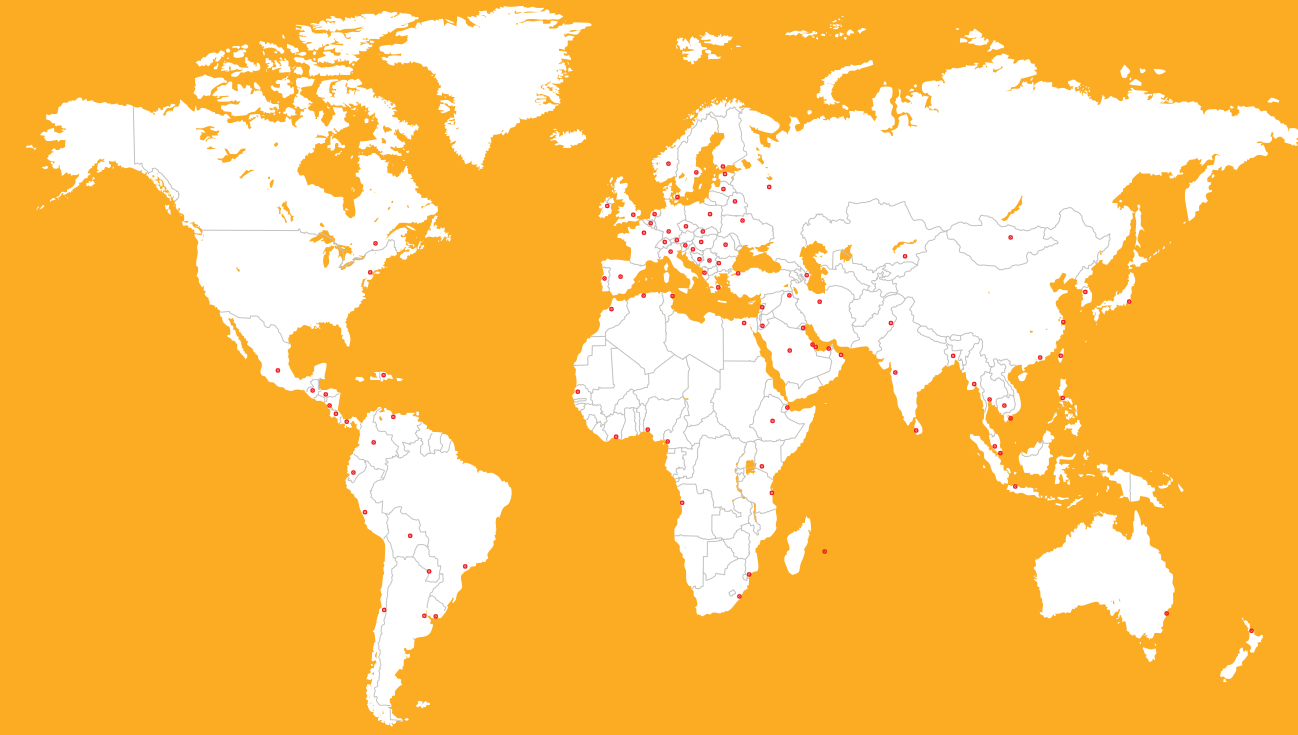


THE CREST
@ PRINCE CHARLES
CRESCENT



SINGA HILL
@ JALAN SINGA

GLOBAL BUT LOCAL PARTNERSHIP



WE ARE SIKA

Sika is a specialty chemicals company with a leading position in the development and production of systems and products for bonding, sealing, damping, reinforcing and protecting in the building sector and the motor vehicle industry. Sika's product lines feature concrete admixtures, mortars, sealants and adhesives, structural strengthening systems, flooring as well as roofing and waterproofing systems.

SIKA KIMIA SDN BHD
No. 9, Jalan Timur,
46000 Petaling Jaya
Selangor D.E., Malaysia

Contact
Phone +603 7957 0111
Fax +603 7956 7291
www.sika.com.my

BUILDING TRUST

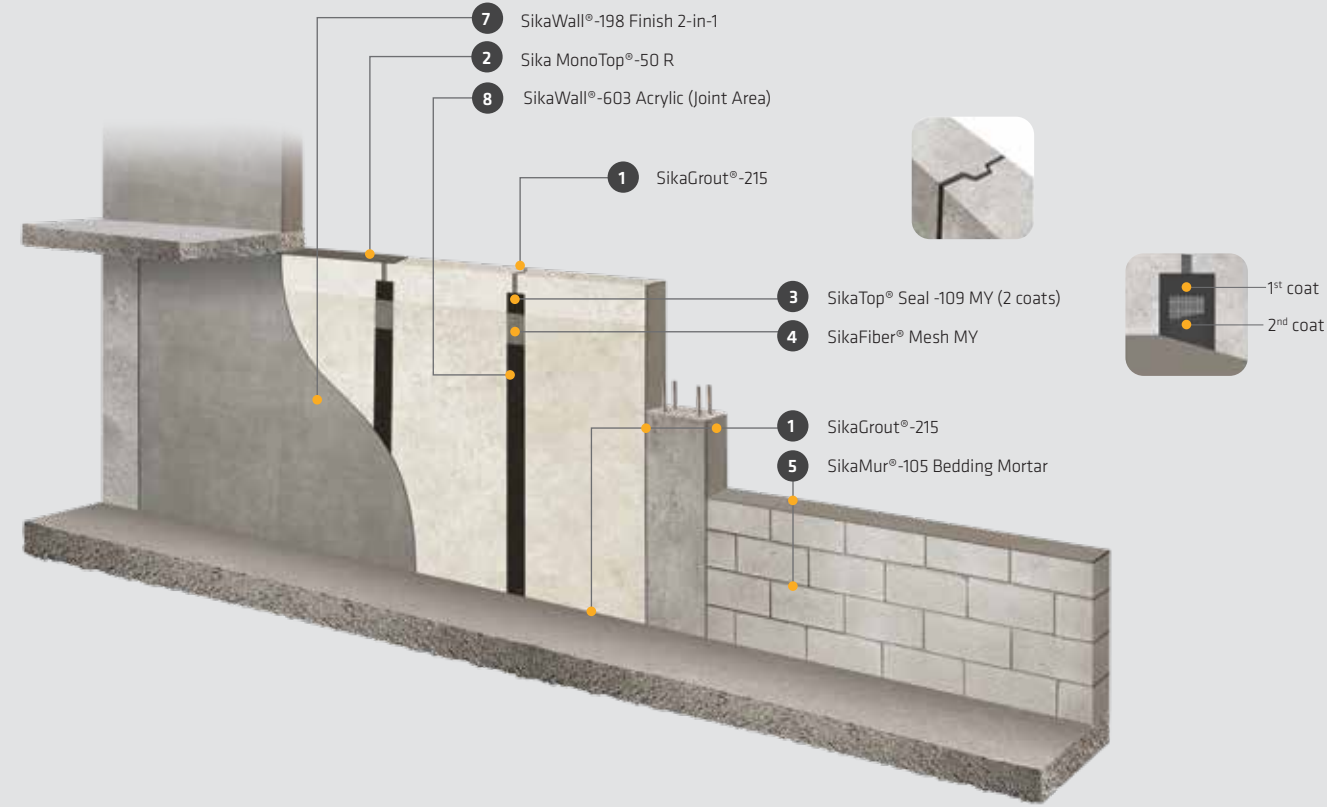


SIKA SOLUTION FOR IBS WALL PANELS & AAC /ALC BLOCKS

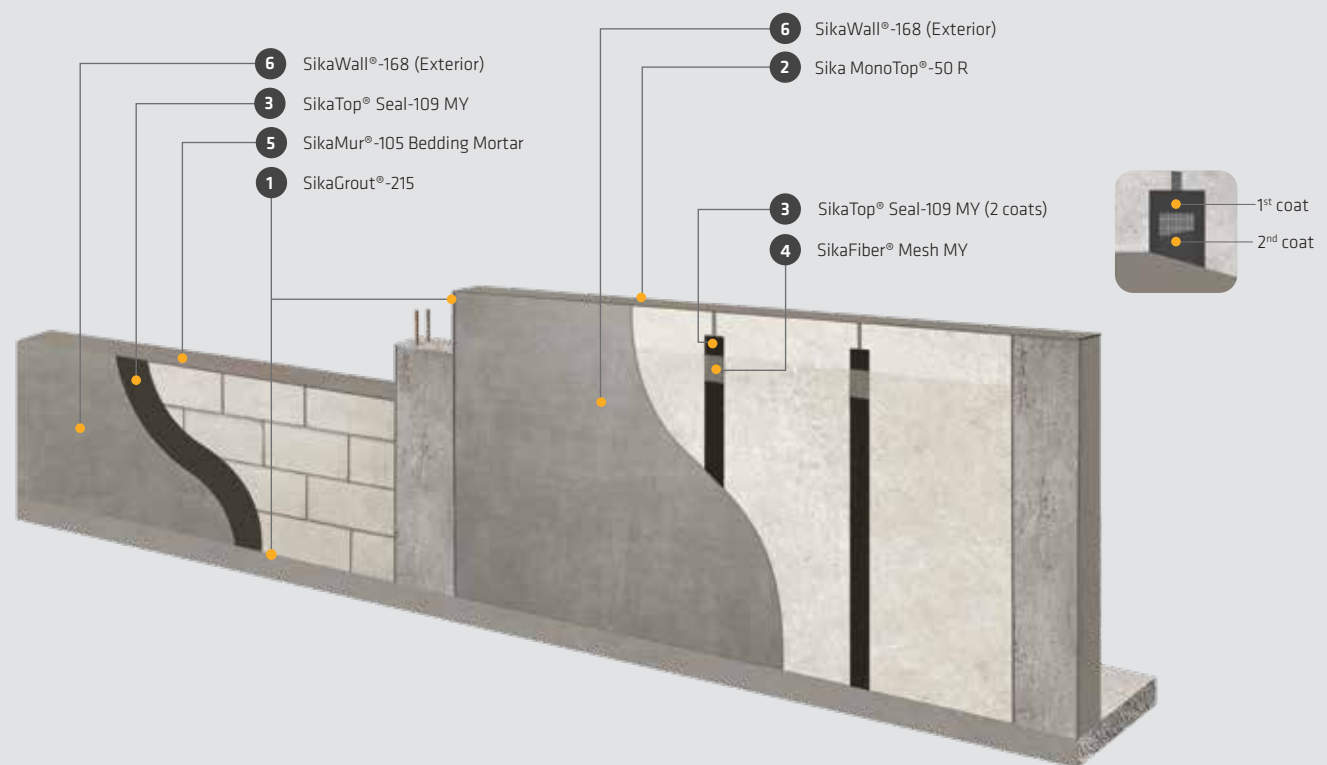


IBS WALL PANELS & AAC/ALC BLOCKS SYSTEM SOLUTIONS

▶ INTERIOR



▶ EXTERIOR

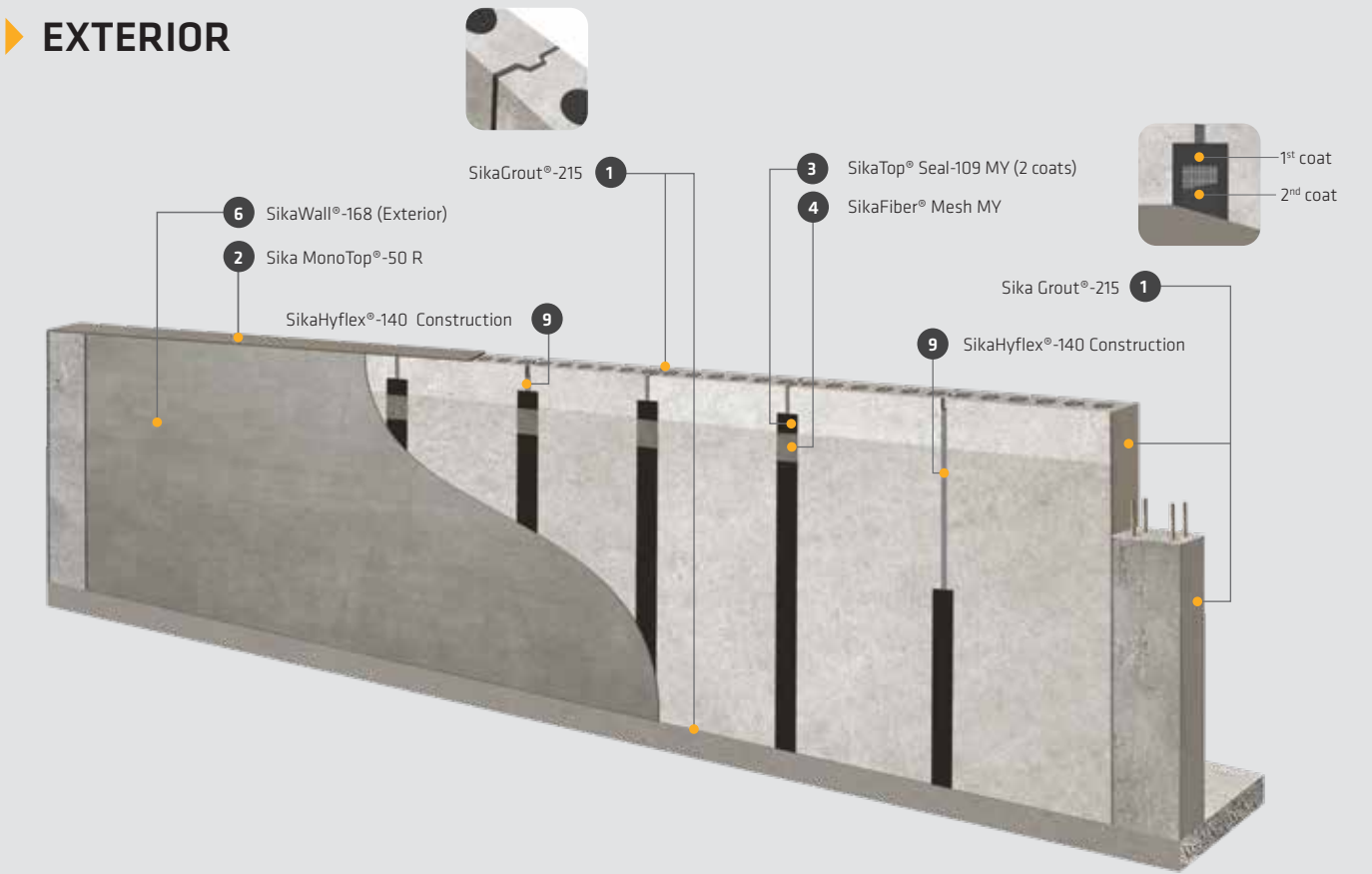


SIKA MATERIAL FOR IBS WALL PANELS & AAC/ALC BLOCKS

- 
1. SikaGrout®-215
 SikaGrout®-215 Pumpable shrinkage compensated cementitious grout
- 
2. Sika MonoTop®-50 R
 General purpose, shrinkage controlled, fibre-reinforced patch repair mortar
- 
3. SikaTop® Seal-109 MY
 Polymer-modified, flexible, cementitious waterproofing coating
- 
4. SikaFiber® Mesh MY
 High strength fibreglass alkali-resistant mesh fabric.
- 
5. SikaMur®-105 Bedding Mortar
 High performance cementitious-based adhesive mortar
- 
6. SikaWall®-168 Plaster
 High performance, cementitious render
- 
7. SikaWall®-198 Finish 2-in-1
 High performance, cementitious finish skimcoat
- 
8. SikaWall®-603 Acrylic (Lanko 103)
 Skim coat plus ready-to-use skim rendering coating
- 
9. SikaHyflex®-140 Construction
 Joint sealant for building joints
- 
10. SikaCeram®-288 MY (C2TE S1)
 C2TE S1 high performance, flexible cementitious tile adhesive
- 
11. Sikalastic®-1 KMY
 One component fiber reinforced, flexible cementitious waterproofing compound
- 
12. DavcogROUT + Davco GROUT ADMIX PLUS RL 1000
 Floor and wall grout joint filler

HOLLOW CORE PANELS SYSTEM SOLUTIONS

▶ EXTERIOR



IBS WALL PANELS & AAC/ALC BLOCK WALL

▶ WET AREA



AAC/ALC BLOCK

▶ DRY AREA



Remarks:
 • For application, please refer technical data sheets for more information.